

AVERNAS GOLF CLUB - STATISTIQUES DU PARCOURS 2018

Les statistiques du parcours sont basées sur les scores des compétitions individuelles entre le 1^{er} avril et le 31 octobre 2018.

Le nombre de cartes par tee de départ en 2018 est de :

White (Back tee men)	Yellow (Front tee men)	Blue (Back tee ladies)	Red (Front tee ladies)
868	1751	349	781

Pour un total de 3,749 cartes durant la saison d'été 2018 (environ 200 cartes de plus que 2017).

Ce document vous propose une analyse des scores moyens par trou, en fonction du tee de départ, ainsi qu'une étude du pourcentage de hole in one, eagle, birdies, par, bogey et plus et la comparaison avec nos scores en 2017.

Dans l'ensemble, comme vous le constaterez, nous avons généralement mieux joué en 2018 qu'en 2017. Allons-nous faire mieux encore en 2019 ?

Bonne lecture.



MOYENNE DES COUPS EN STROKEPLAY

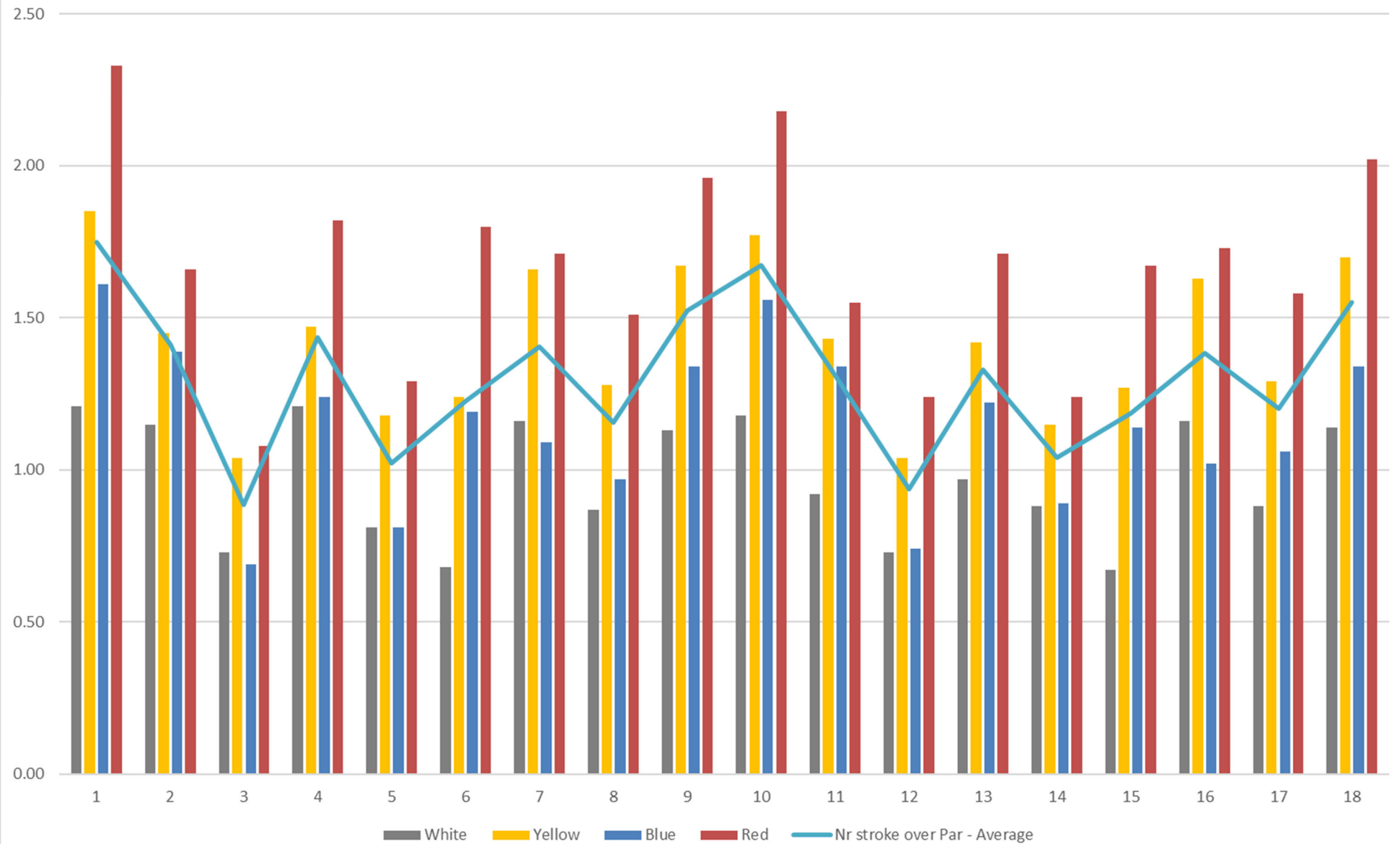
Hole	1	2	3	4	5	6	7	8	9	10	11	12	13	14	15	16	17	18
Par	4	4	3	4	3	5	4	3	4	4	4	3	4	3	5	4	3	4
White	5.21	5.15	3.73	5.21	3.81	5.68	5.16	3.87	5.13	5.18	4.92	3.73	4.97	3.88	5.67	5.16	3.88	5.14
Yellow	5.85	5.45	4.04	5.47	4.18	6.24	5.66	4.28	5.67	5.77	5.43	4.04	5.42	4.15	6.27	5.63	4.29	5.7
Blue	5.61	5.39	3.69	5.24	3.81	6.19	5.09	3.97	5.34	5.56	5.34	3.74	5.22	3.89	6.14	5.02	4.06	5.34
Red	6.33	5.66	4.08	5.82	4.29	6.8	5.71	4.51	5.96	6.18	5.55	4.24	5.71	4.24	6.67	5.73	4.58	6.02
Average	5.75	5.41	3.89	5.44	4.02	6.23	5.41	4.16	5.53	5.67	5.31	3.94	5.33	4.04	6.19	5.39	4.20	5.55
Par 4	1	5		7			9		4	2	6		10			8		3
Par 3			6		3			1				5		4			2	
Par 5						1									2			
Nr stroke over Par - Average	1.75	1.41	0.89	1.44	1.02	1.23	1.41	1.16	1.53	1.67	1.31	0.94	1.33	1.04	1.19	1.39	1.20	1.55
White	1.21	1.15	0.73	1.21	0.81	0.68	1.16	0.87	1.13	1.18	0.92	0.73	0.97	0.88	0.67	1.16	0.88	1.14
Yellow	1.85	1.45	1.04	1.47	1.18	1.24	1.66	1.28	1.67	1.77	1.43	1.04	1.42	1.15	1.27	1.63	1.29	1.70
Blue	1.61	1.39	0.69	1.24	0.81	1.19	1.09	0.97	1.34	1.56	1.34	0.74	1.22	0.89	1.14	1.02	1.06	1.34
Red	2.33	1.66	1.08	1.82	1.29	1.80	1.71	1.51	1.96	2.18	1.55	1.24	1.71	1.24	1.67	1.73	1.58	2.02
Ordre des trous basé sur average	1	6	18	5	16	11	7	14	4	2	10	17	9	15	13	8	12	3
Stroke index - ACTUEL	1	9	17	7	11	15	5	13	3	2	10	18	8	12	16	6	14	4

MOYENNE DES SCORES PAR « PAR »

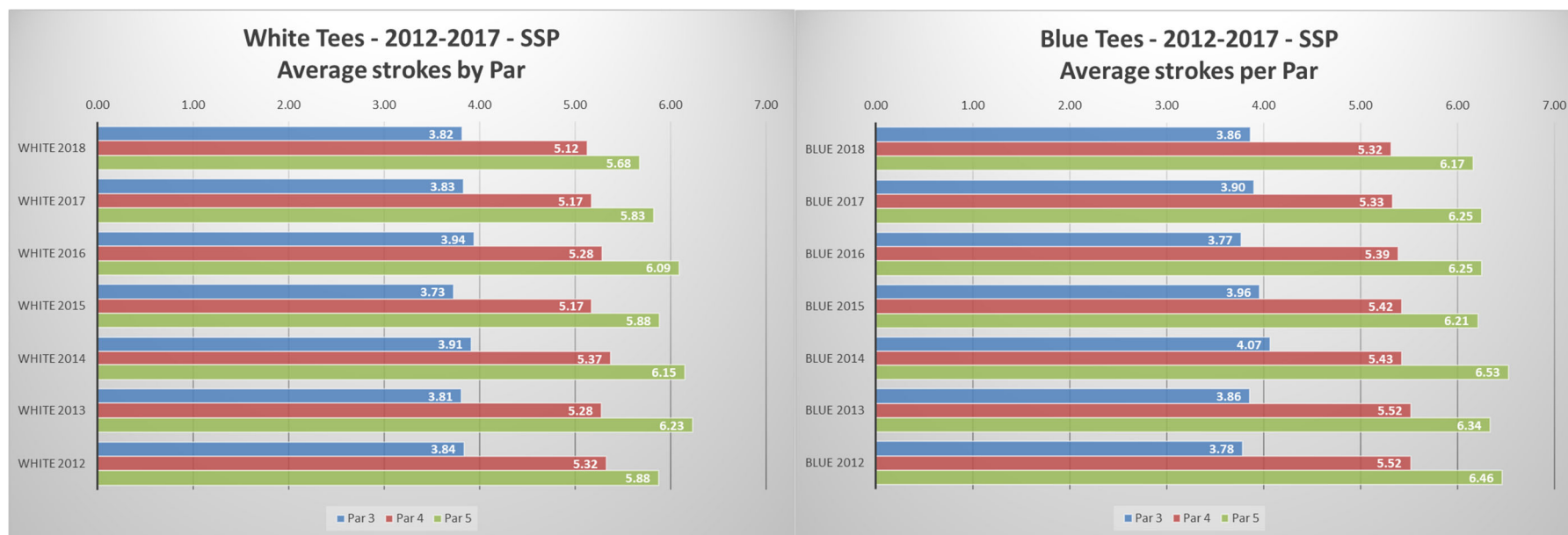
	Par 3	Par 4	Par 5
White	3.82	5.12	5.68
Yellow	4.16	5.61	6.26
Blue	3.86	5.32	6.17
Red	4.32	5.87	6.74
Moyenne	4.04	5.48	6.21

Le graphique, à la page suivante, représente le nombre de coups au-dessus du par. Par ex. le tee « white » fait 3.83 coups en moyenne sur un par 3, le nombre de coup au-dessus du par est 0.83.

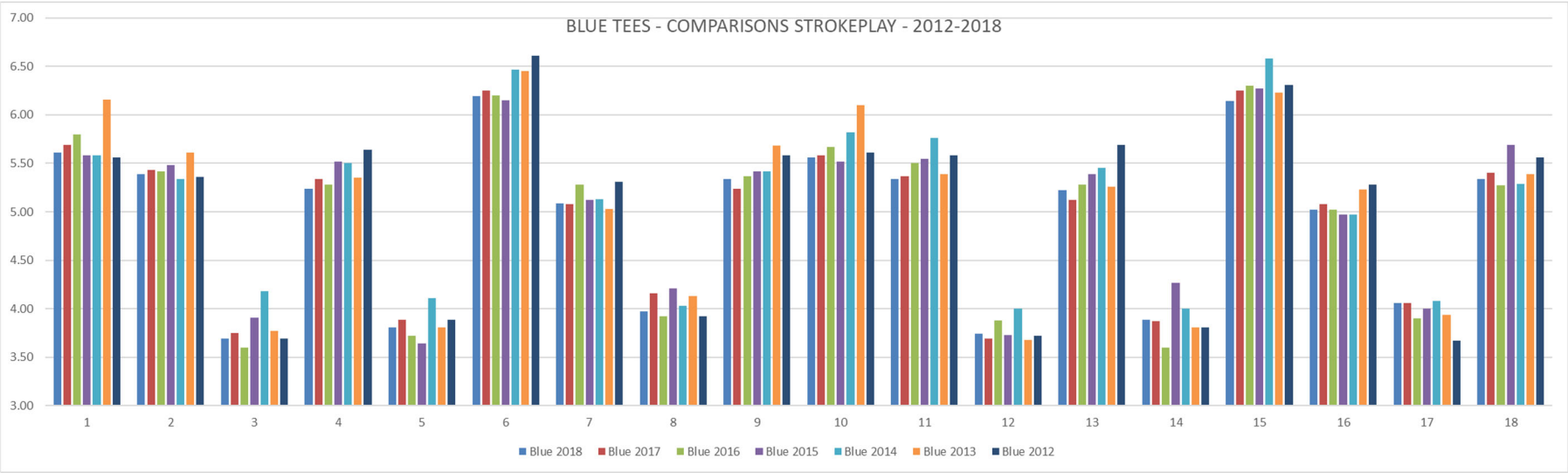
Strokes over Par



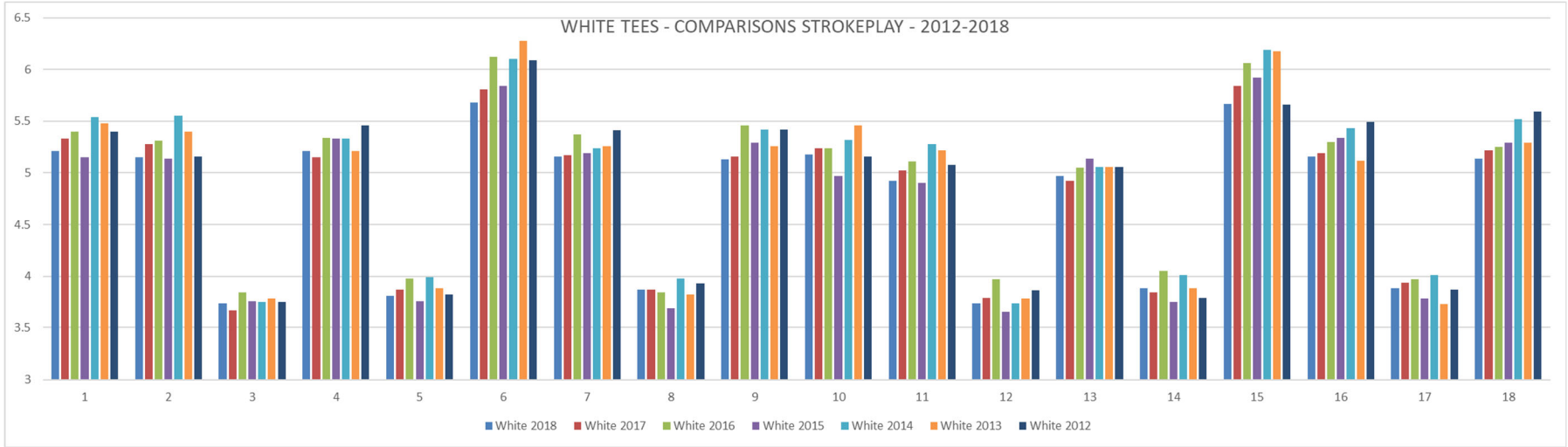
COMPARAISON PAR ANNEE - MOYENNE DES COUPS PAR « PAR »



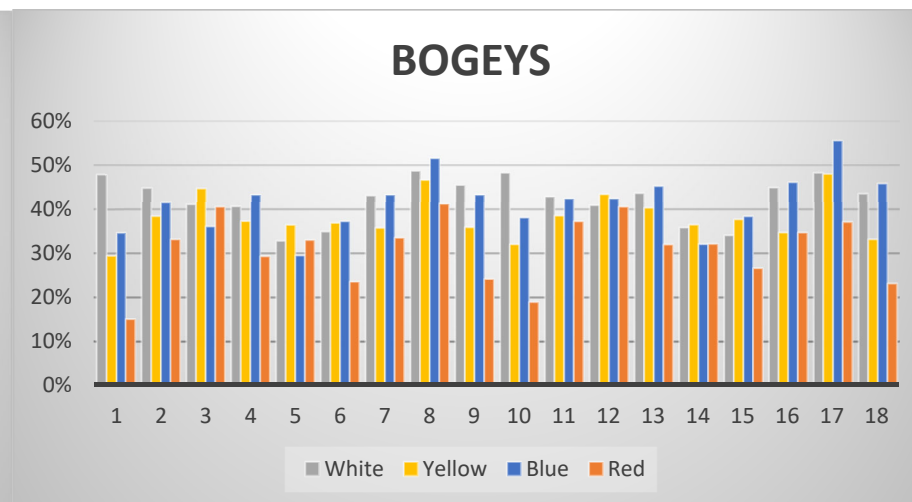
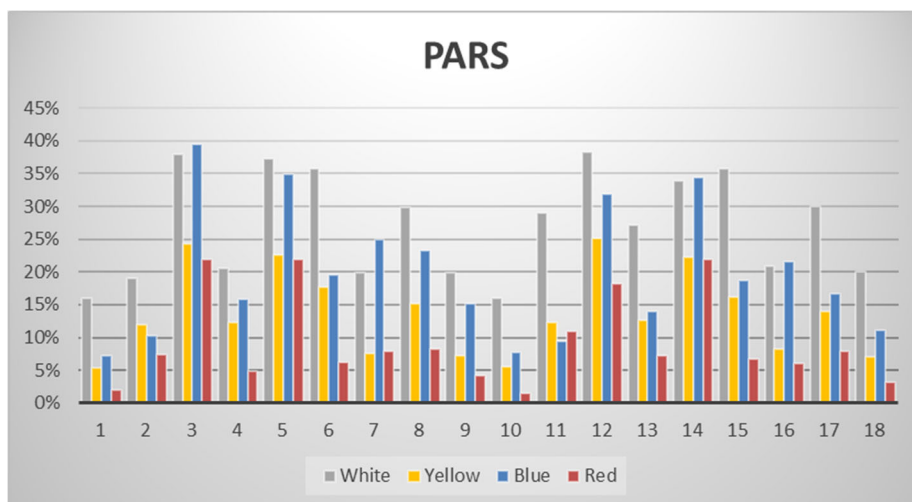
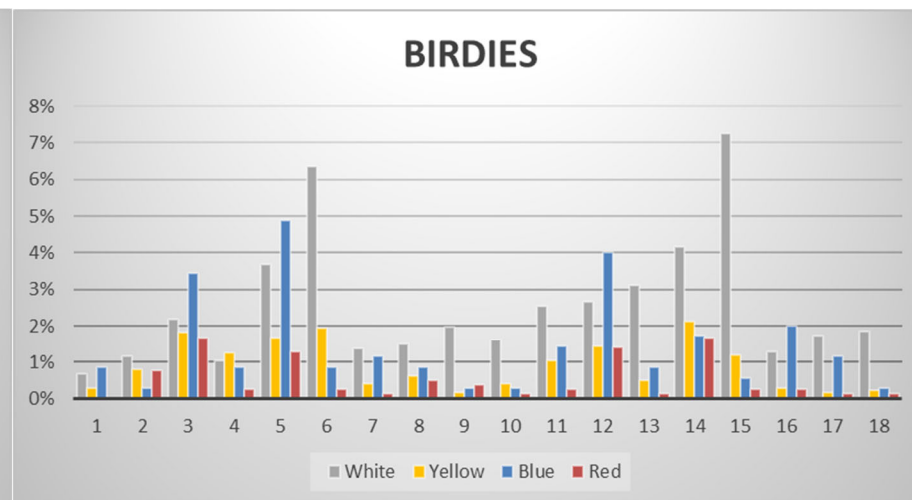
Par trou – Blue (Back Tee Ladies)



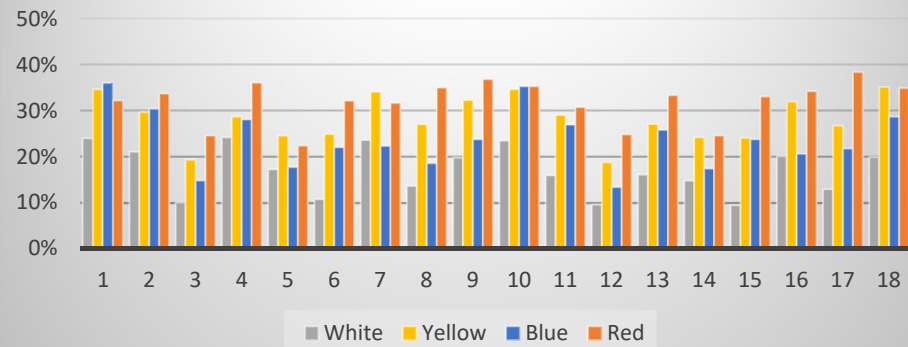
Par trou – White (Back Tee Men)



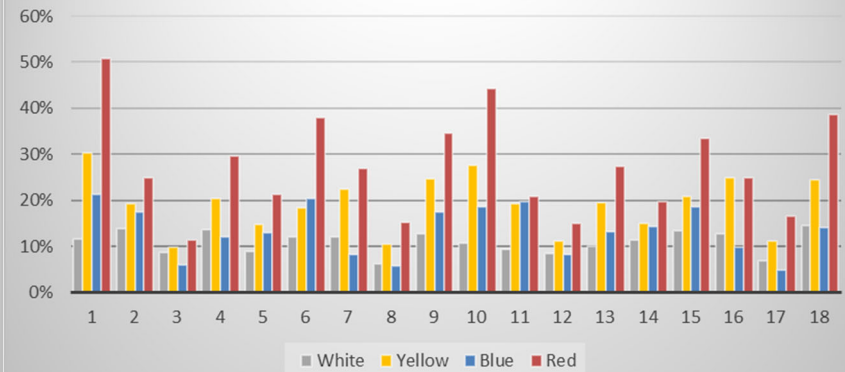
SOMMES-NOUS HOLE-IN-ONE, E AGLE, BIRDIE, PAR, BOGEY, DOUBLE OU PLUS?



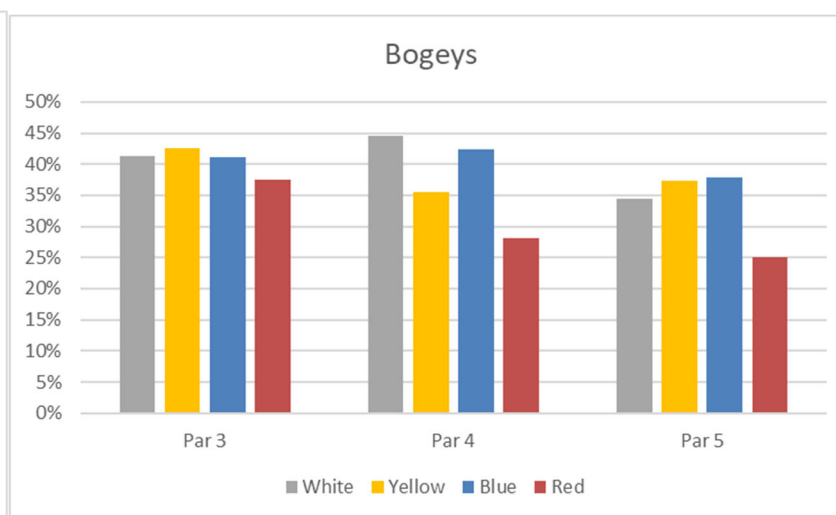
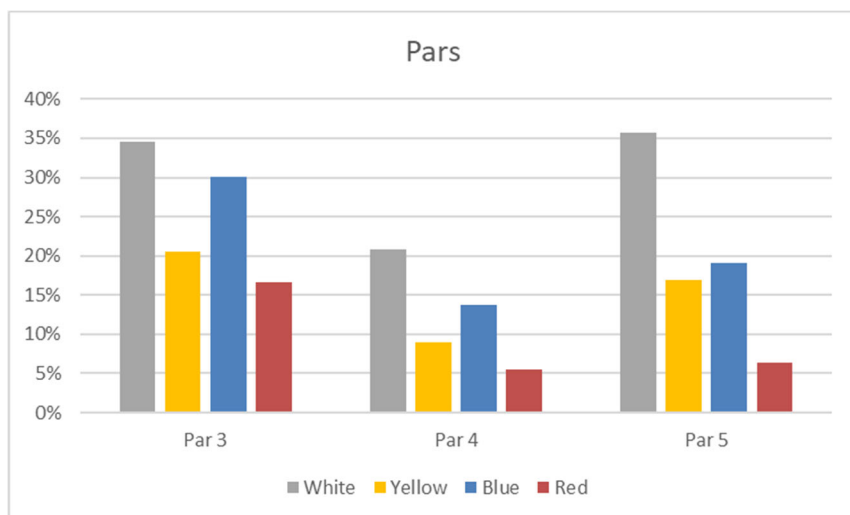
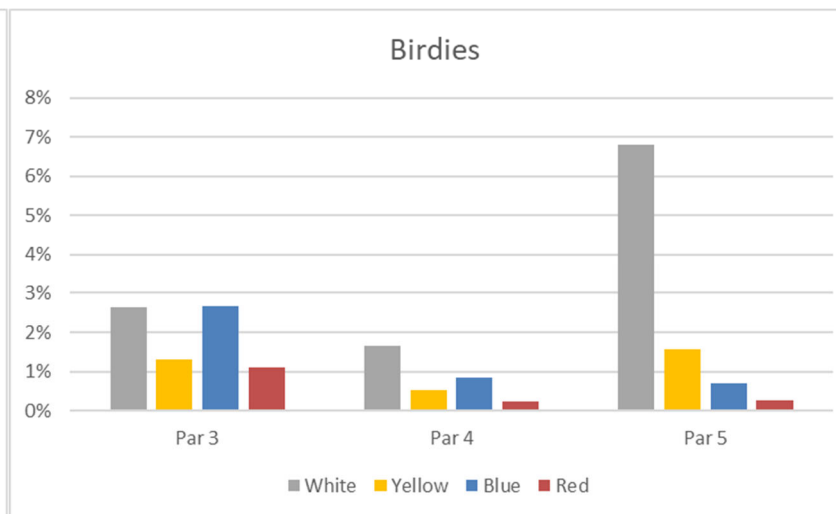
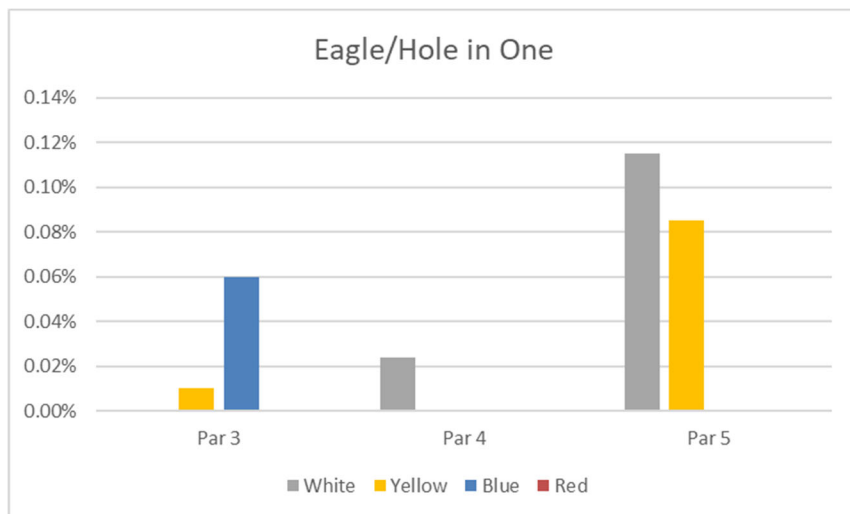
DOUBLE BOGEYS



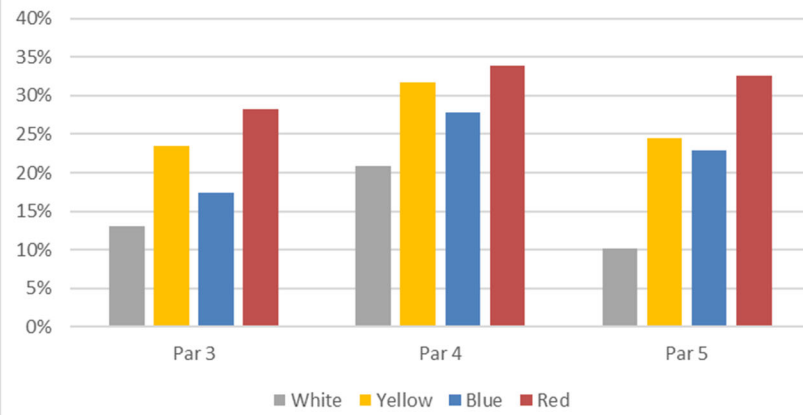
TRIPLE BOGEYS OU PLUS



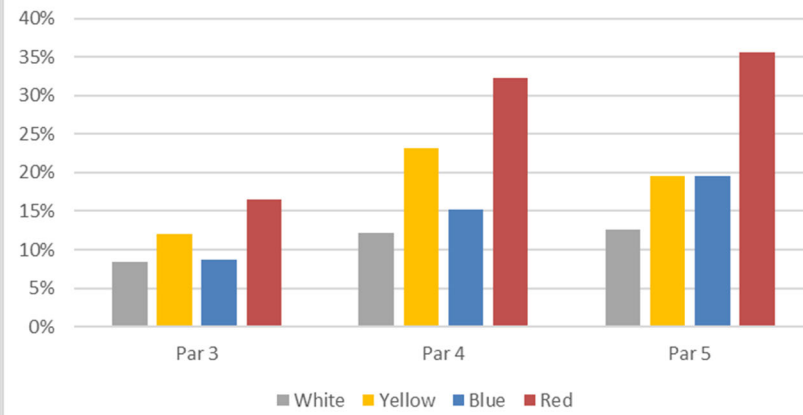
PAR TYPE DE TOUR - PAR 3, PAR 4, PAR 5



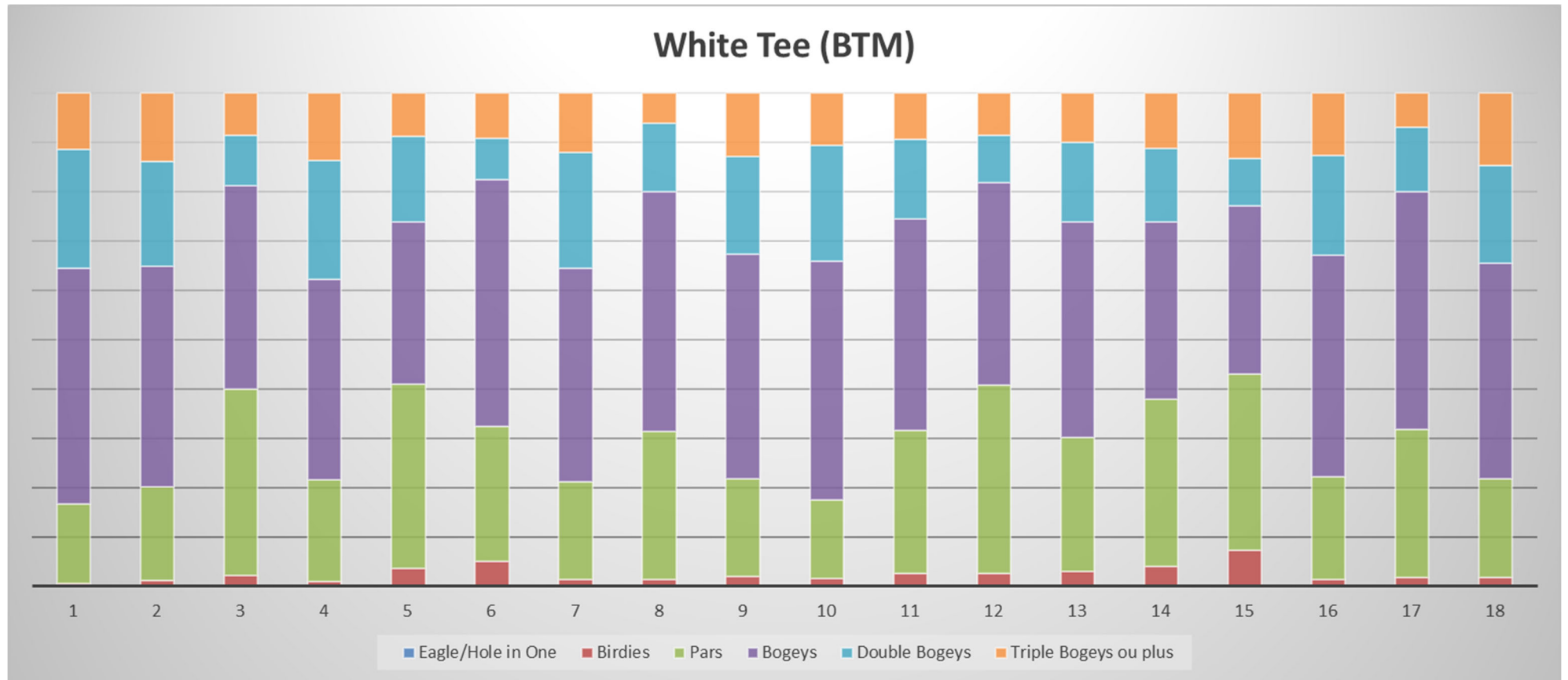
Double Bogeys



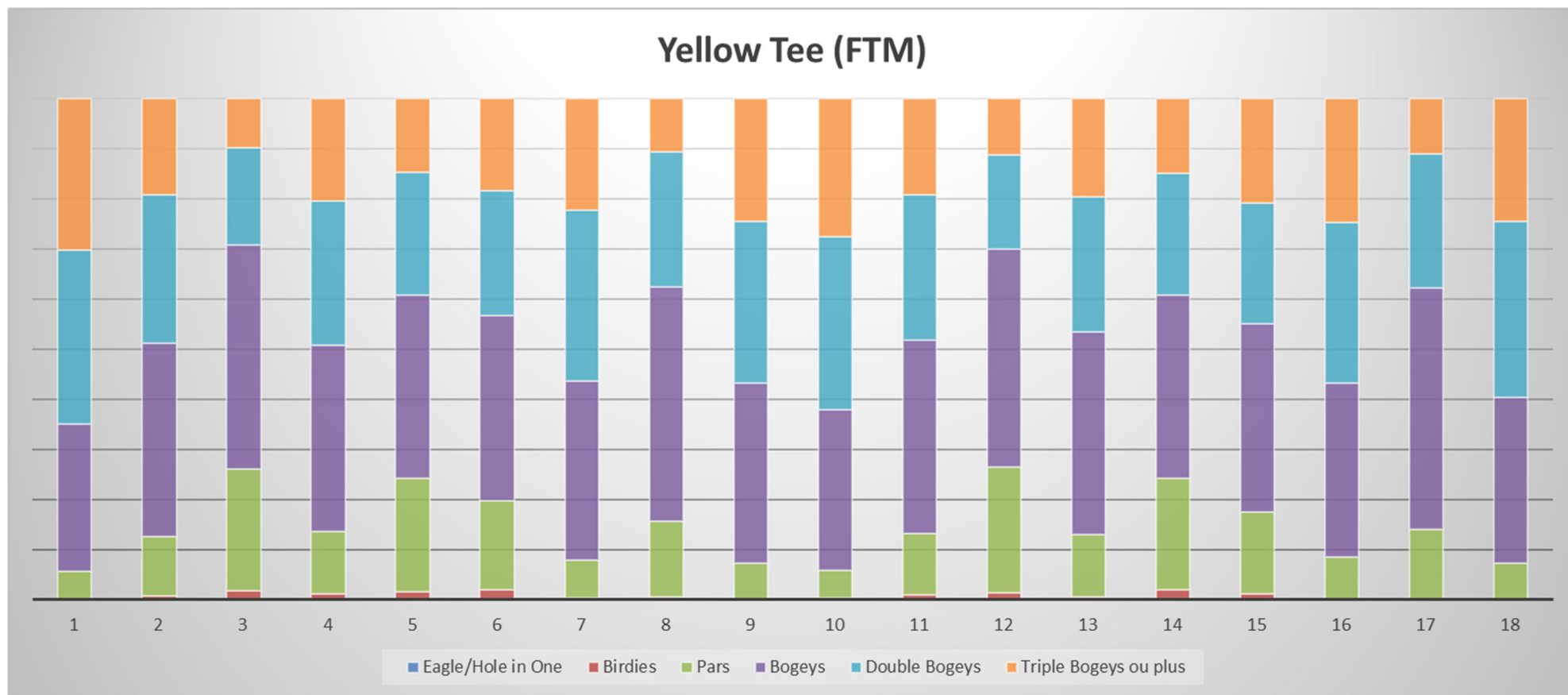
Triple Bogeys ou plus



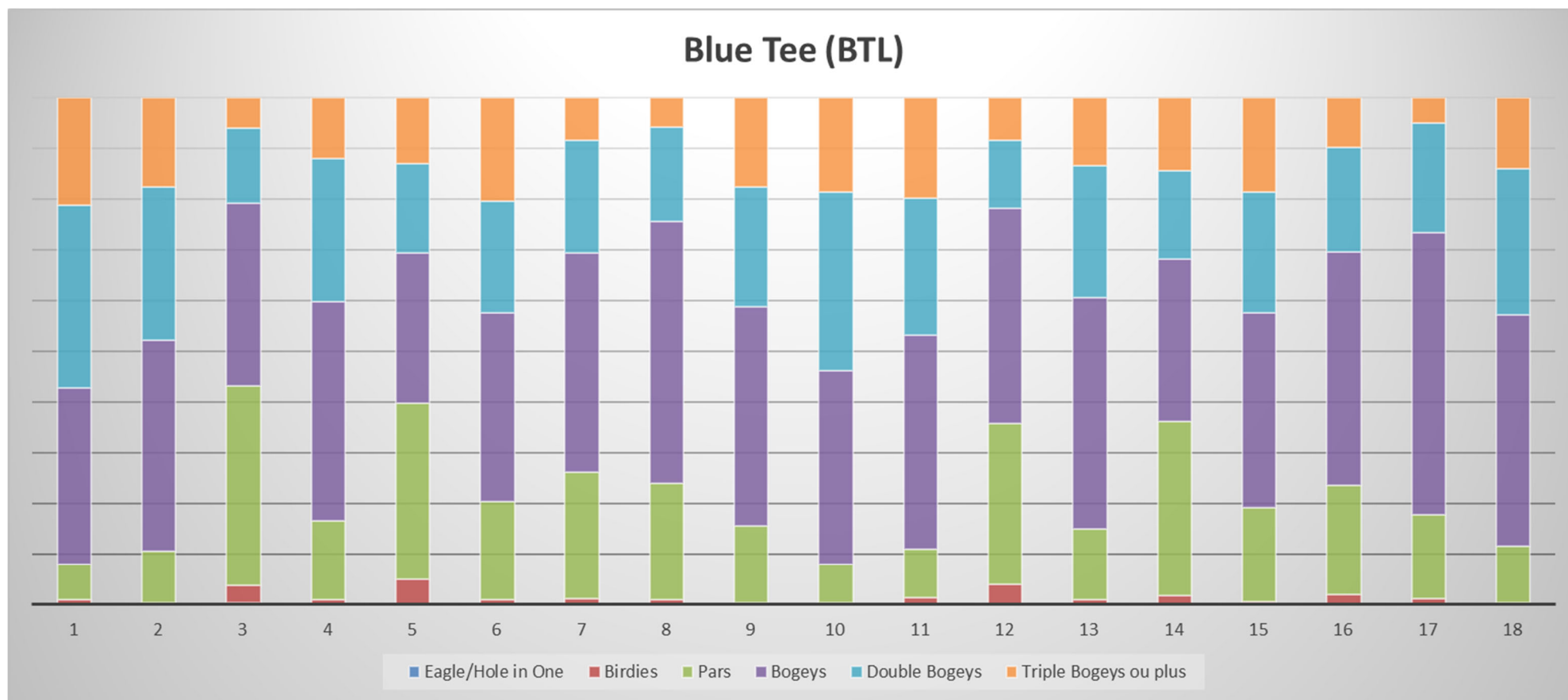
WHITE - BACK TEE MEN



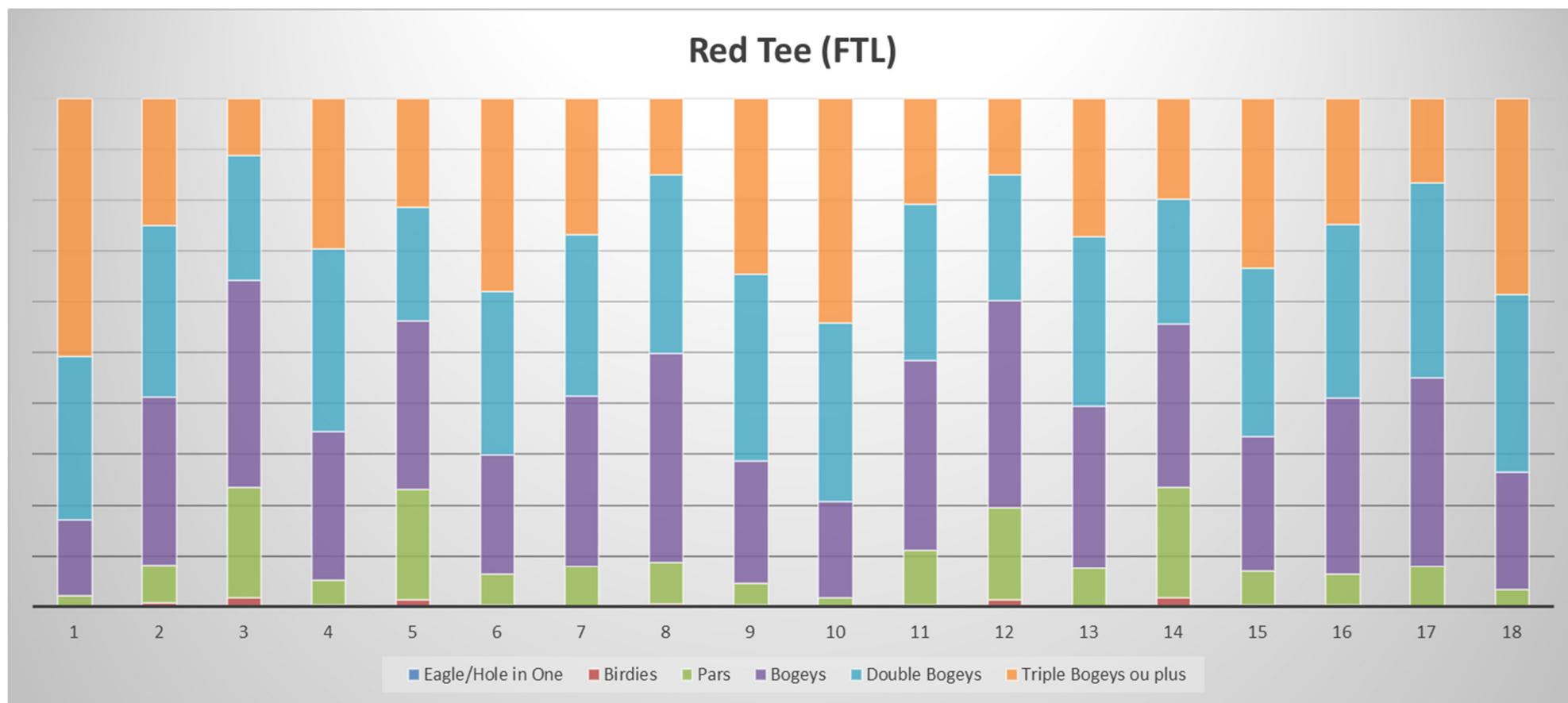
YELLOW - FRONT TEE MEN



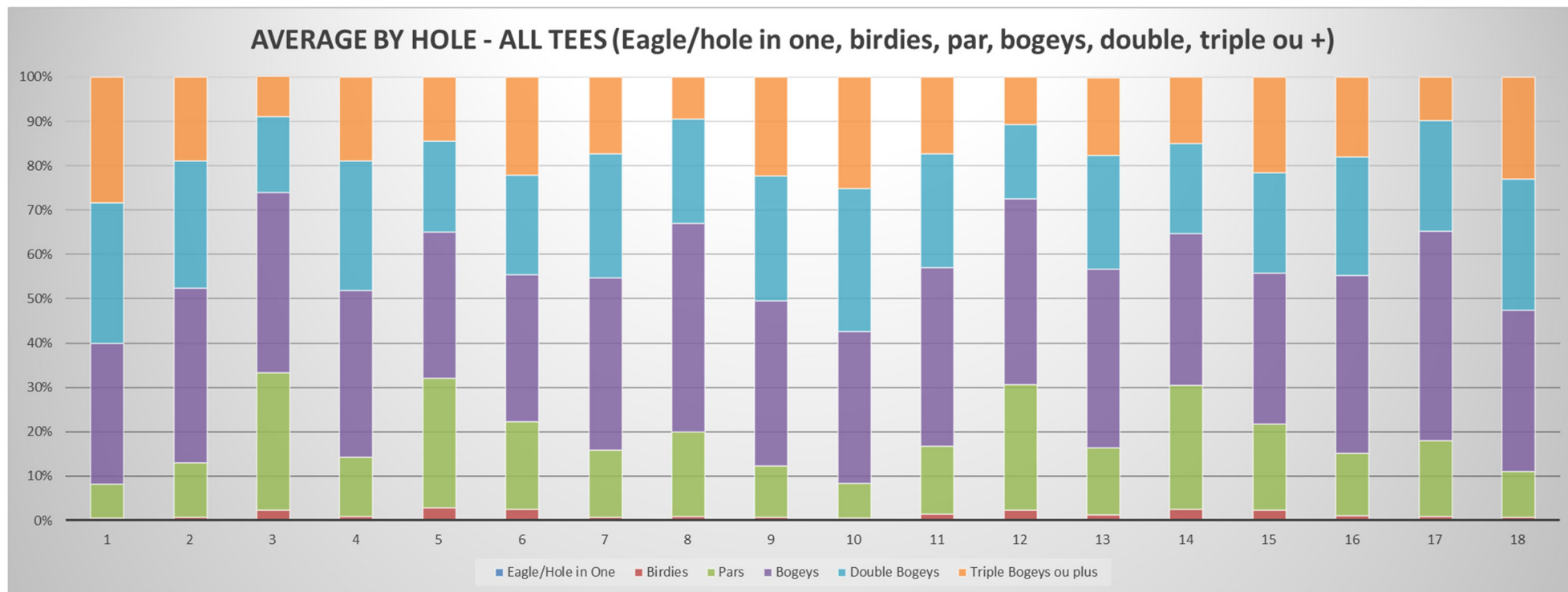
BLUE - BACK TEE LADIES



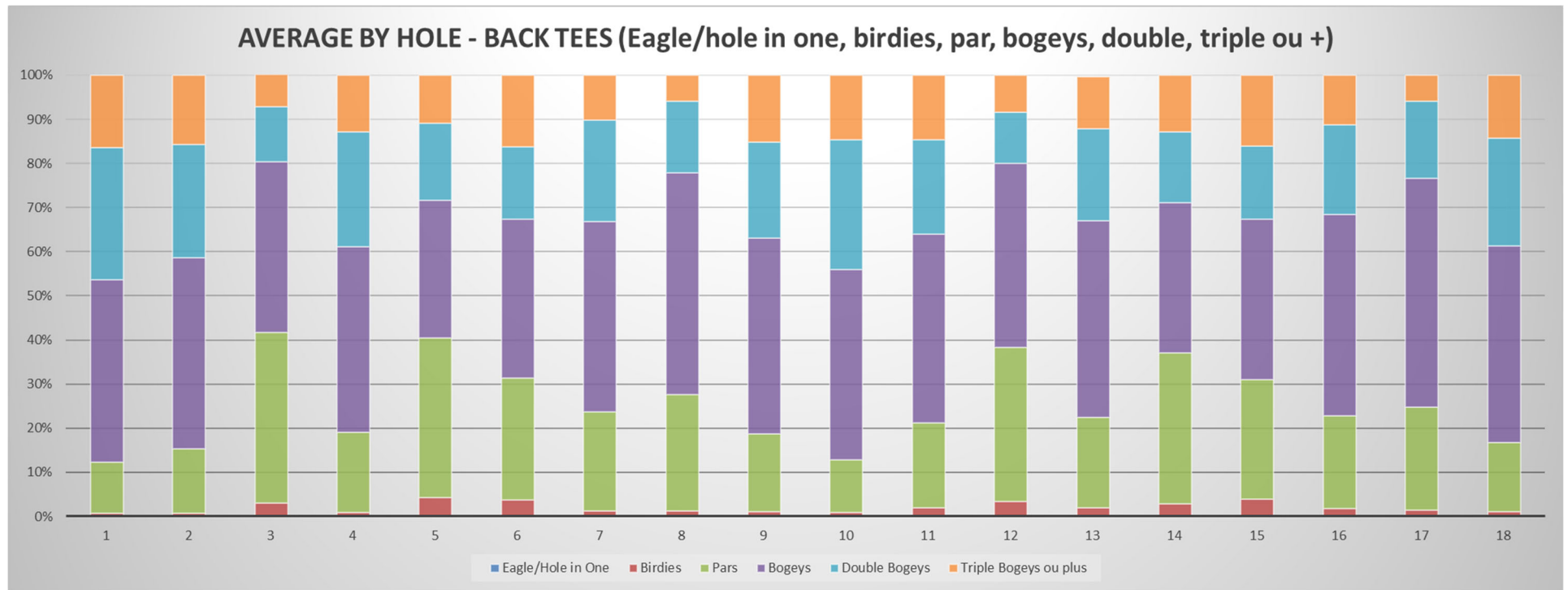
RED - FRONT TEE LADIES



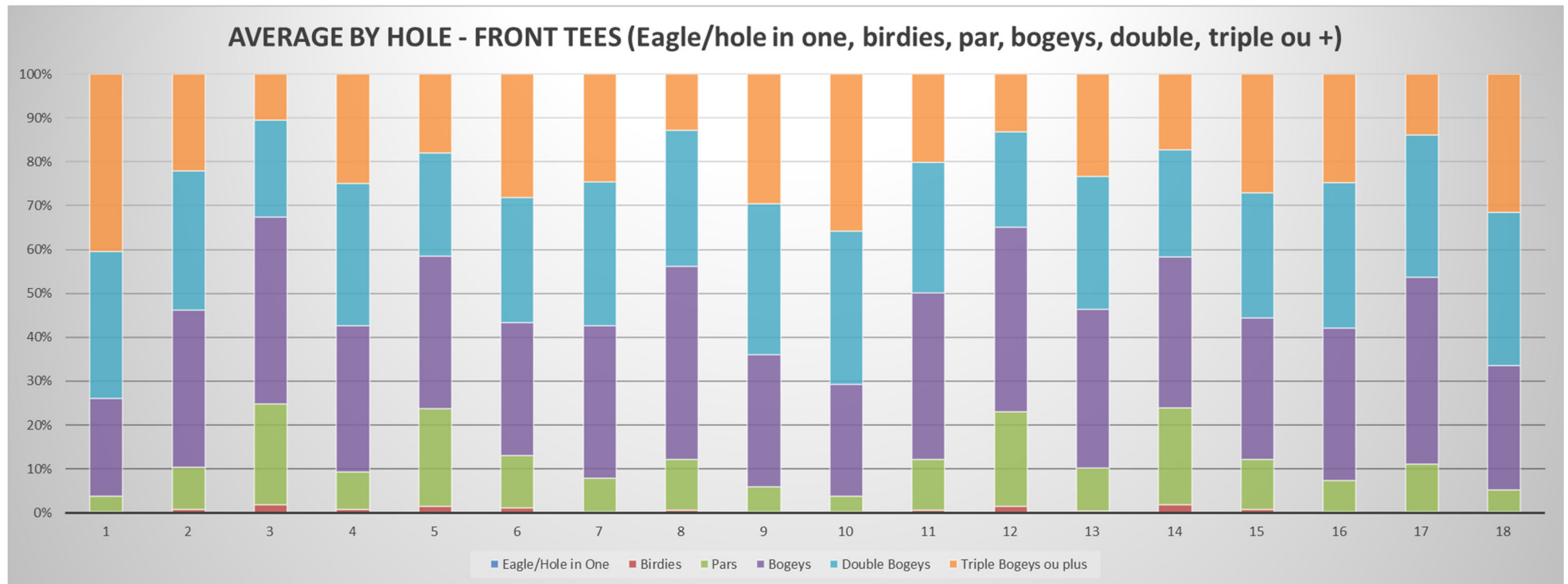
AVERAGE - ALL TEES



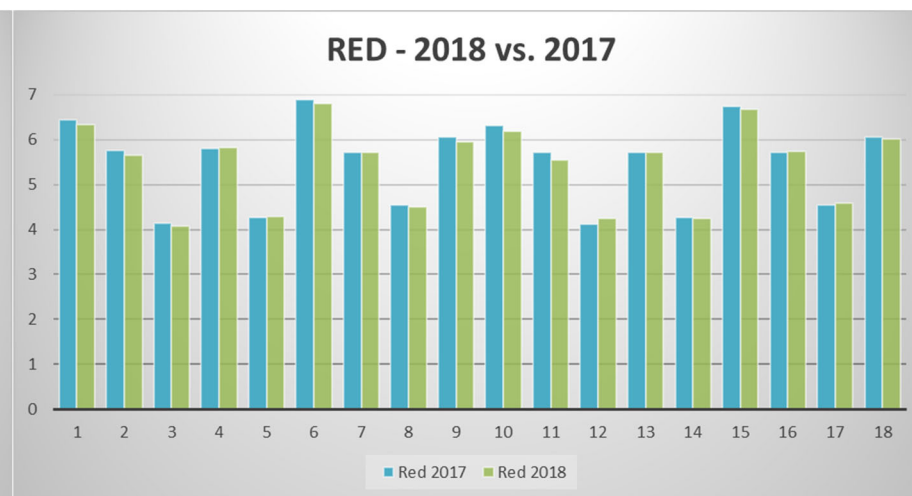
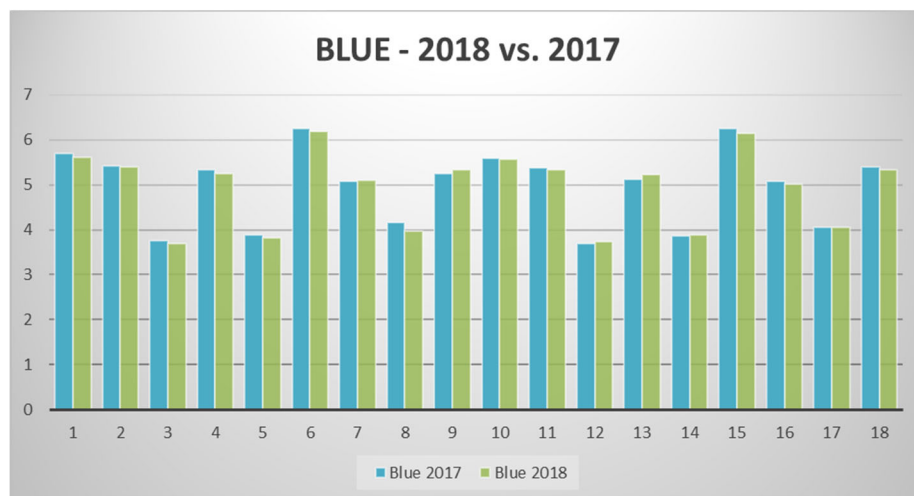
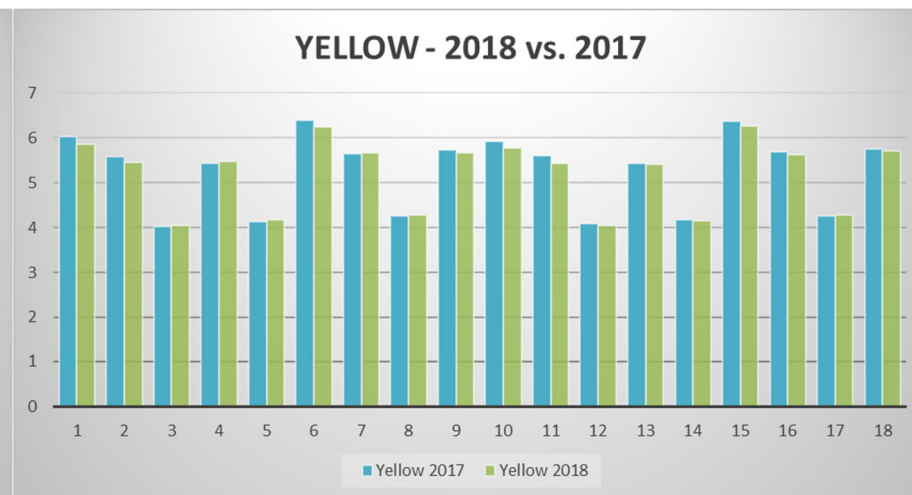
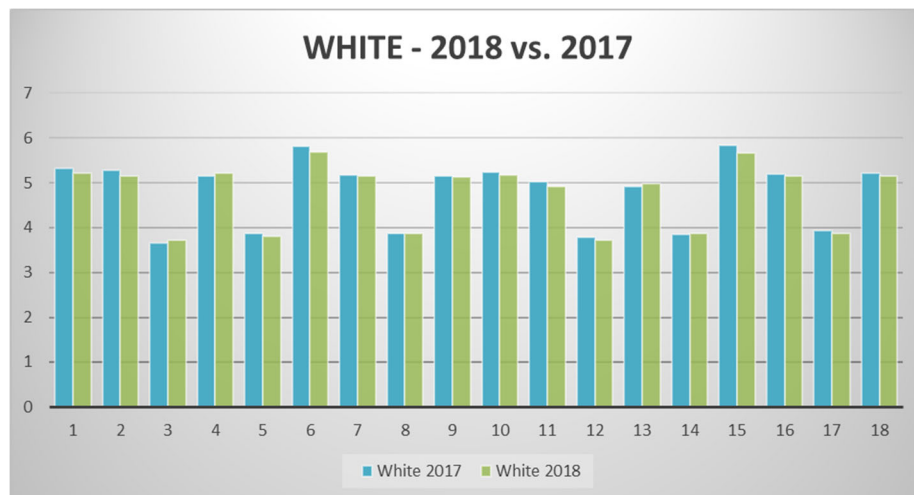
BACK TEES - AVERAGE BY HOLE

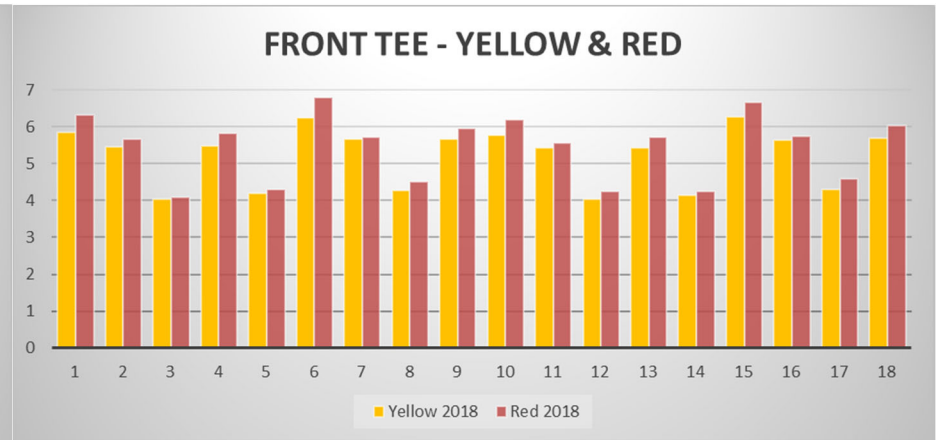
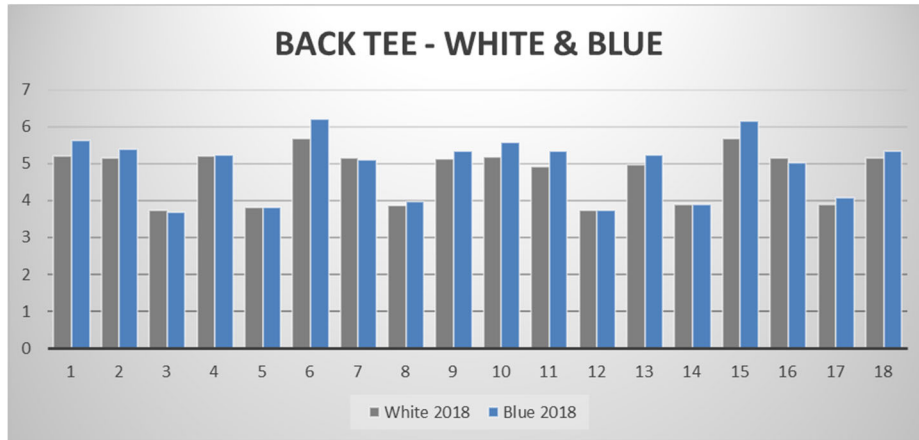


FRONT TEES - AVERAGE BY HOLE

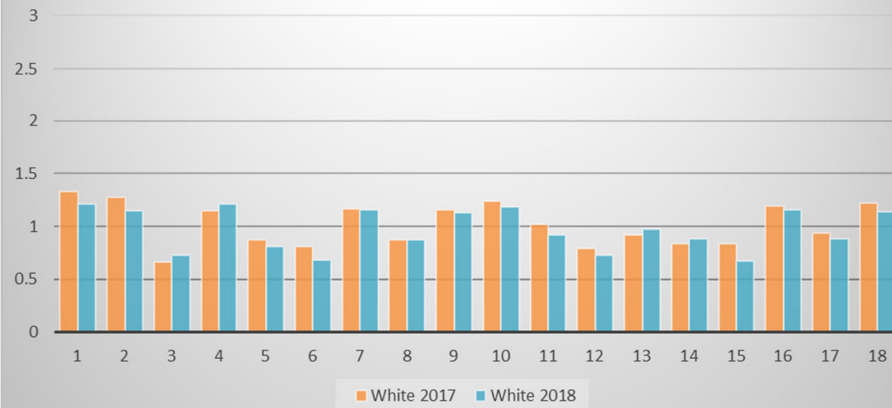


COMPARAISON DES SCORES (strokeplay) 2018-2017

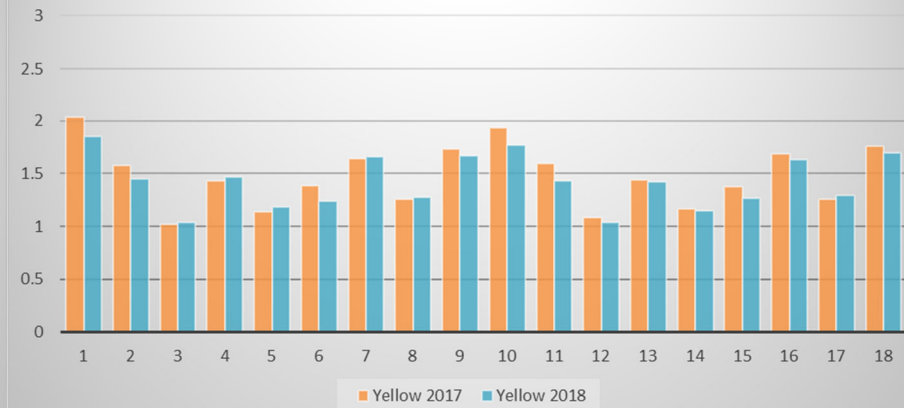




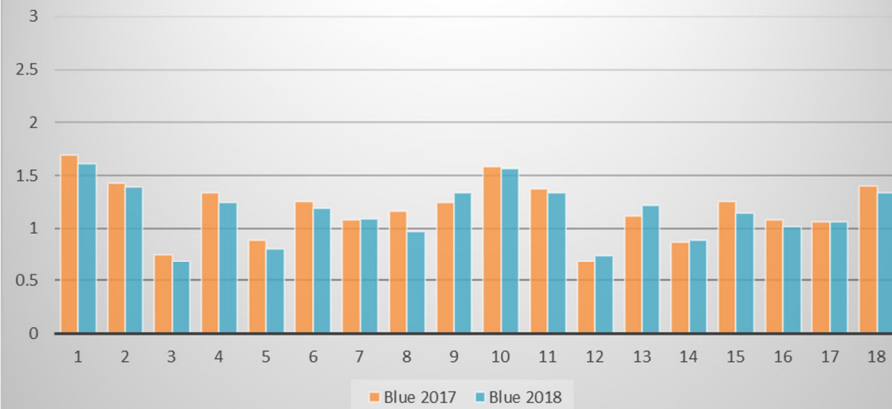
WHITE - STROKES OVER PAR - 2018 vs. 2017



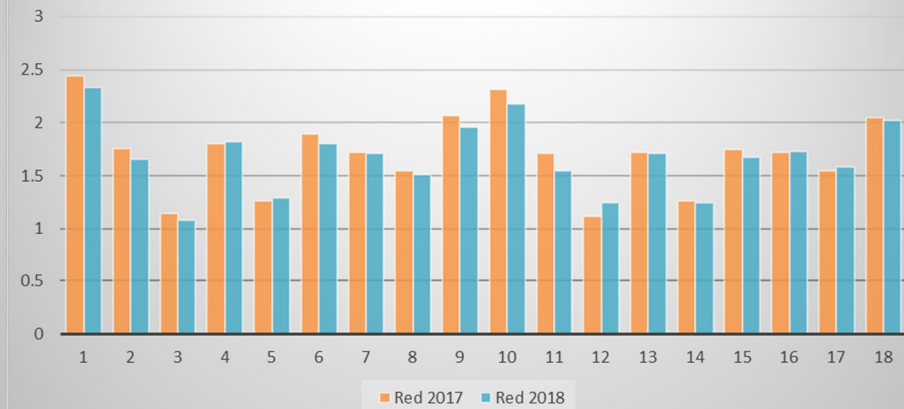
YELLOW - STROKES OVER PAR - 2018 vs. 2017



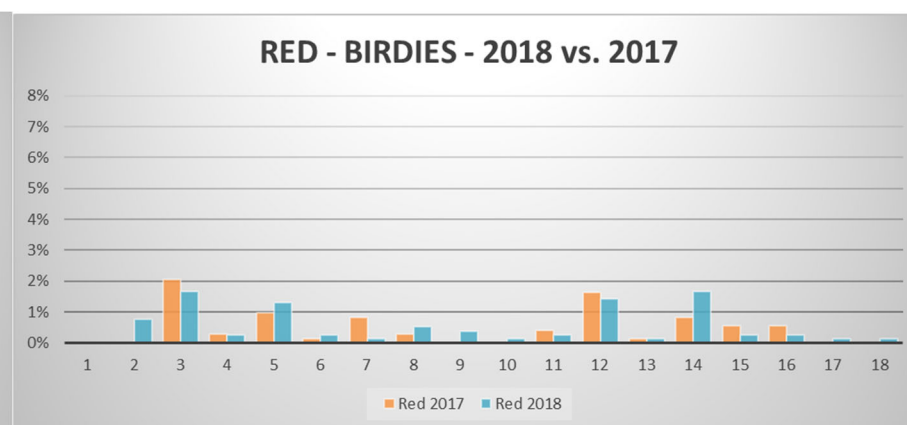
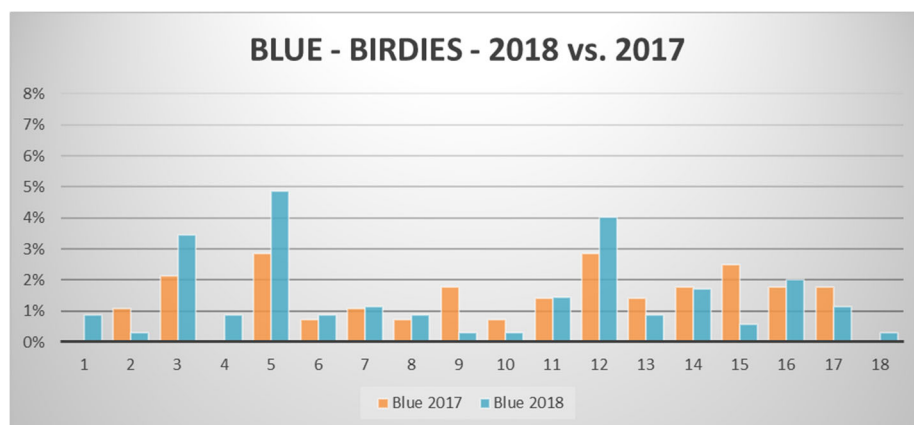
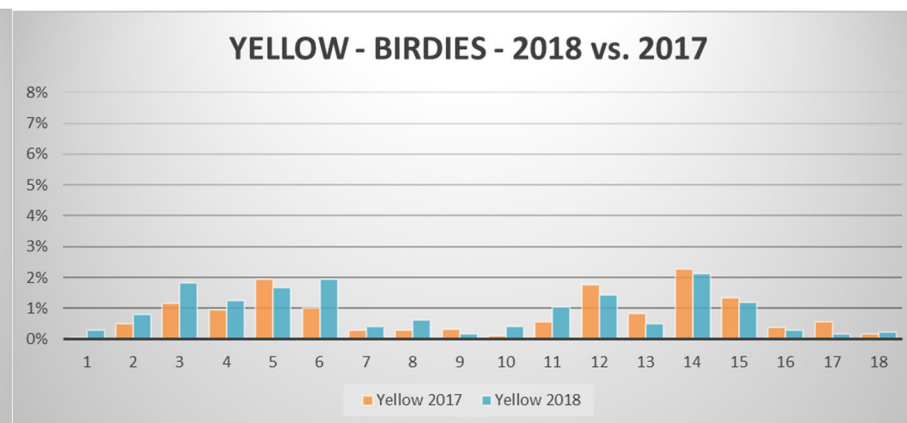
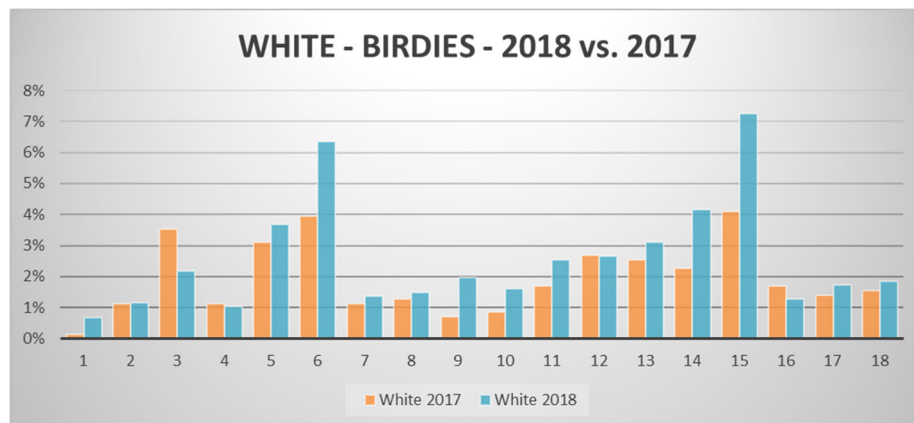
BLUE - STROKES OVER PAR - 2018 vs. 2017



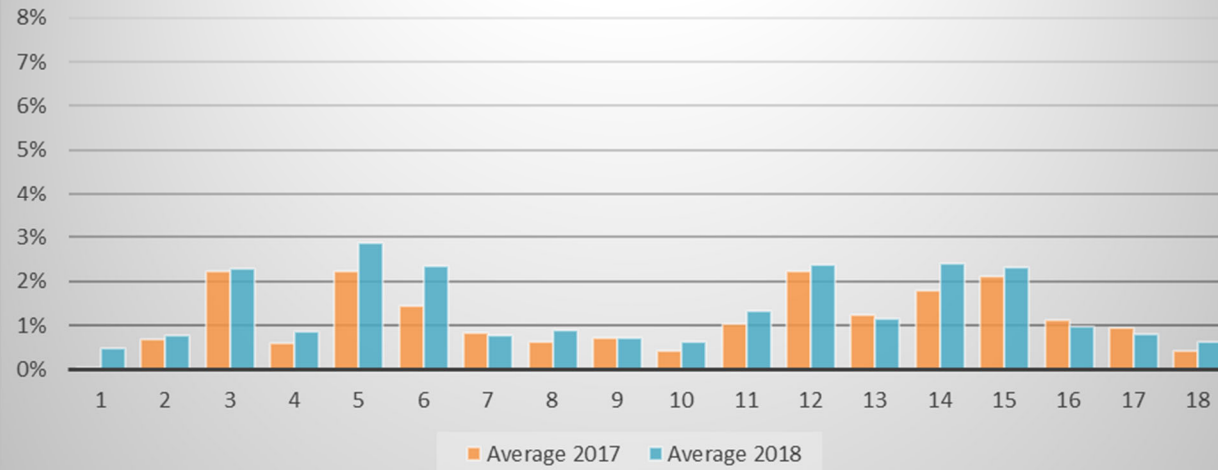
RED - STROKES OVER PAR - 2018 vs. 2017



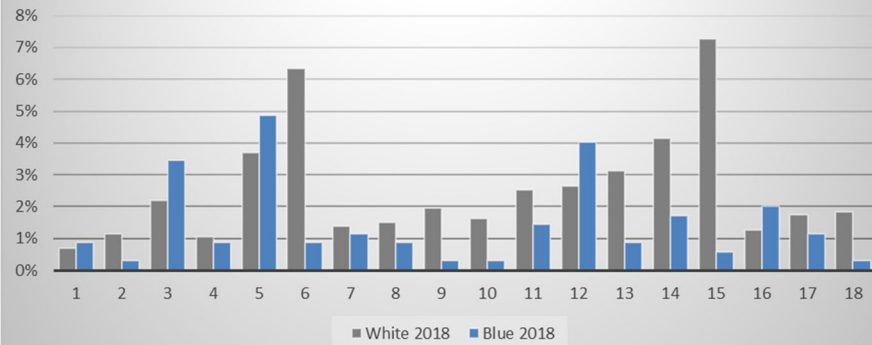
COMPARAISON - BIRDIES - 2017-2018 (pourcentage)



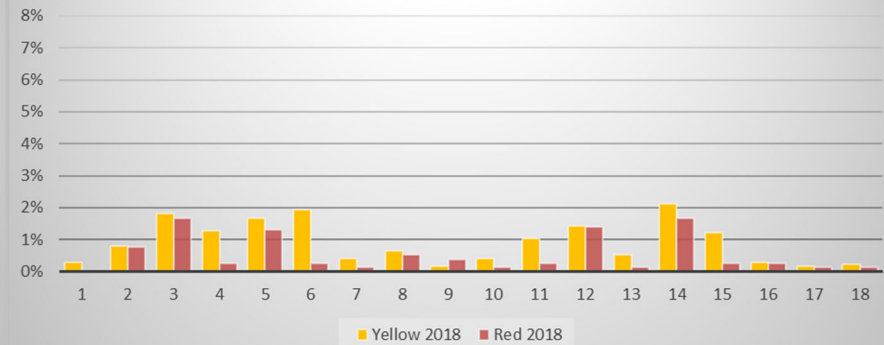
AVERAGE - BIRDIES - 2018 vs. 2017



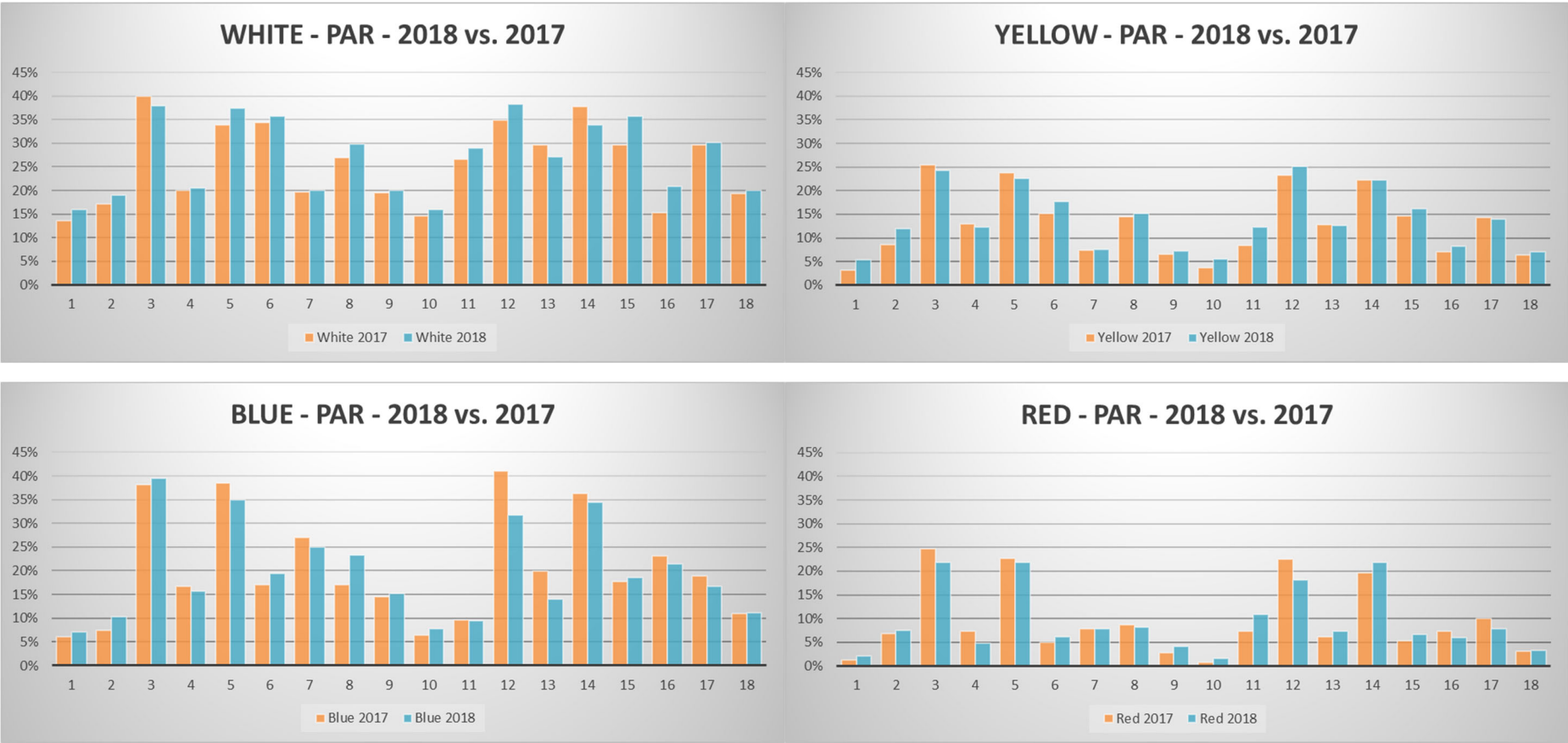
BACK TEES (White & Blue) - BIRDIES



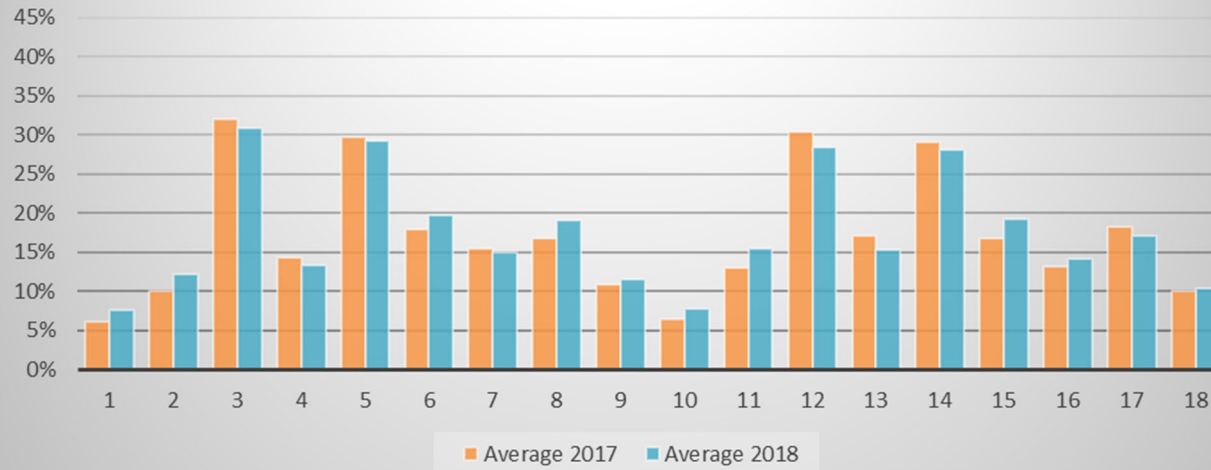
FRONT TEES (Yellow & Red) - BIRDIES



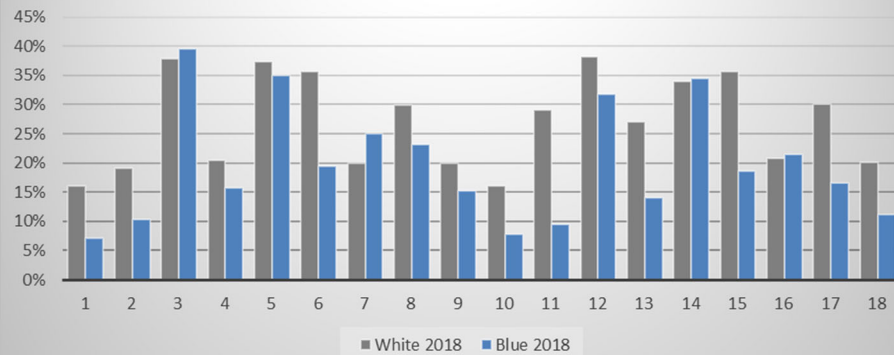
COMPARAISON - PAR - 2017-2018 (pourcentage)



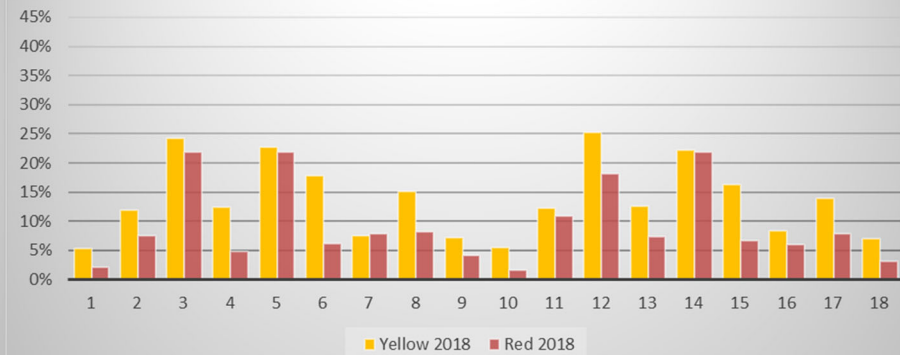
AVERAGE - PAR - 2018 vs. 2017



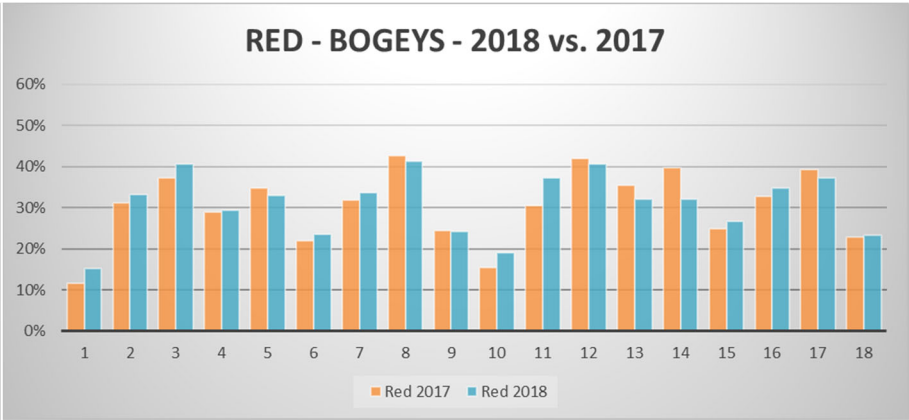
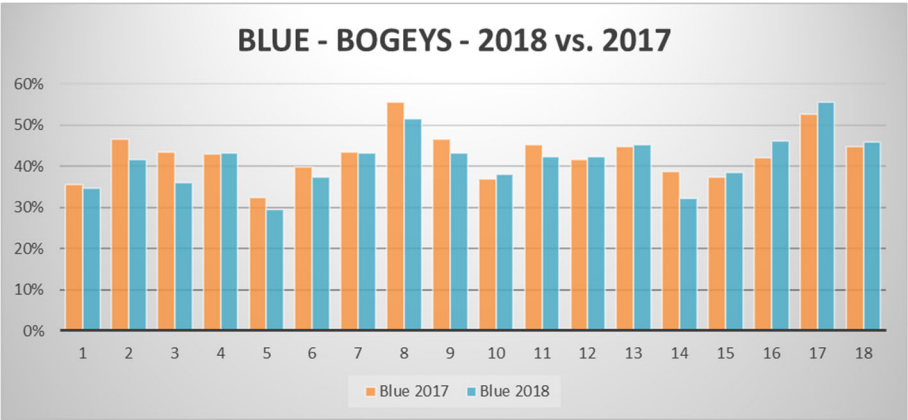
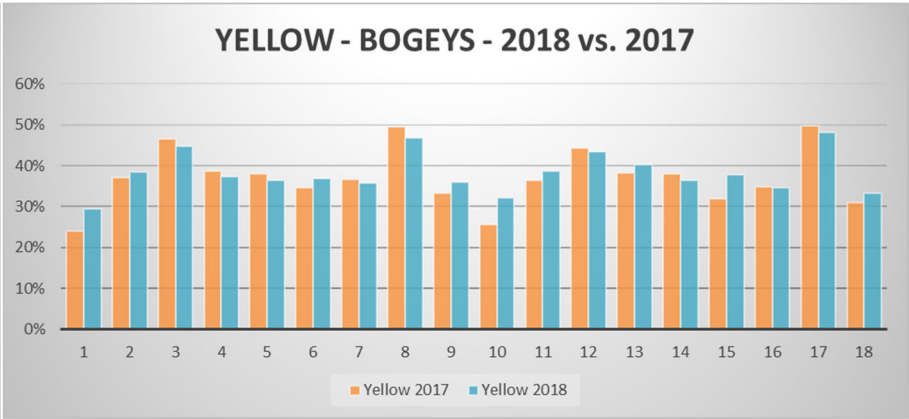
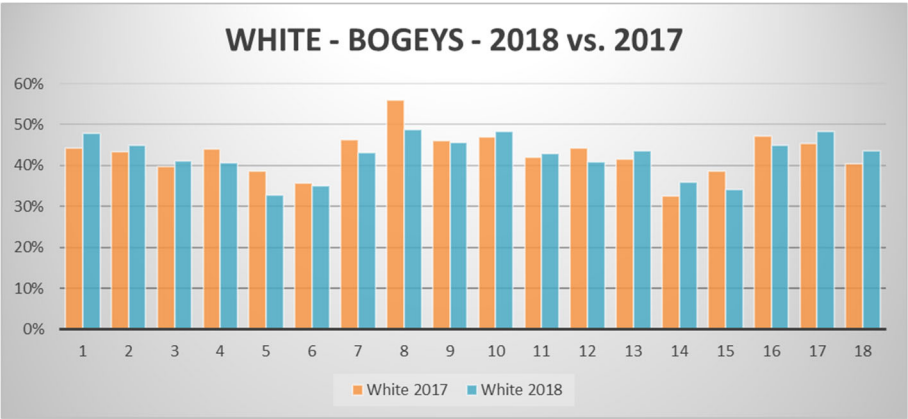
BACK TEES (White & Blue) - PAR



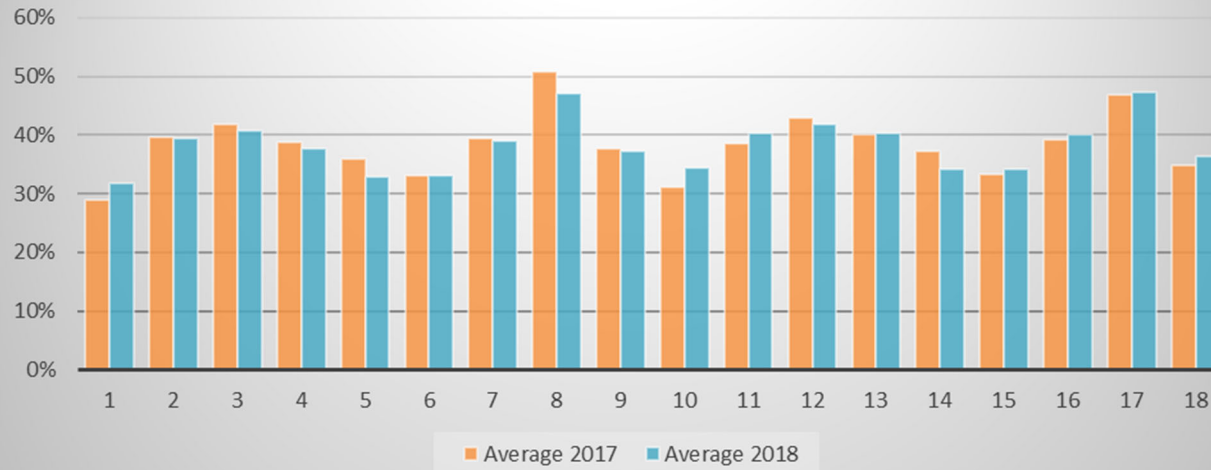
FRONT TEES (Yellow & Red) - PAR



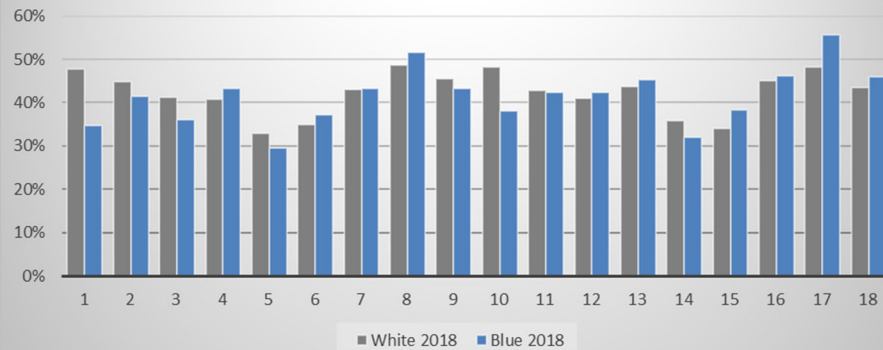
COMPARAISON - BOGEYS - 2017-2018 (pourcentage)



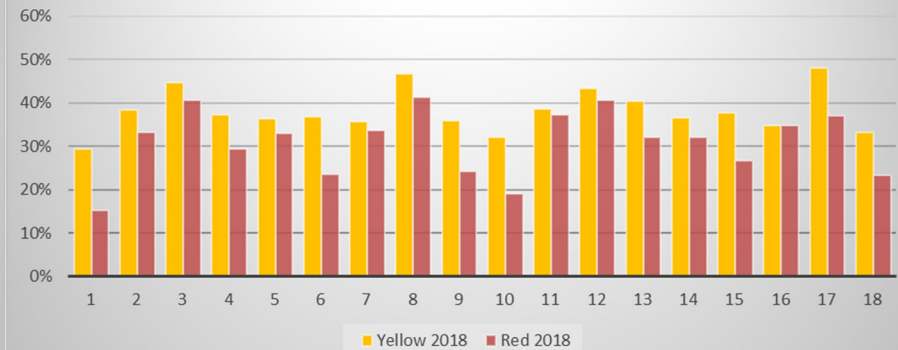
AVERAGE - BOGEYS - 2018 vs. 2017



BACK TEES (White & Blue) - BOGEYS

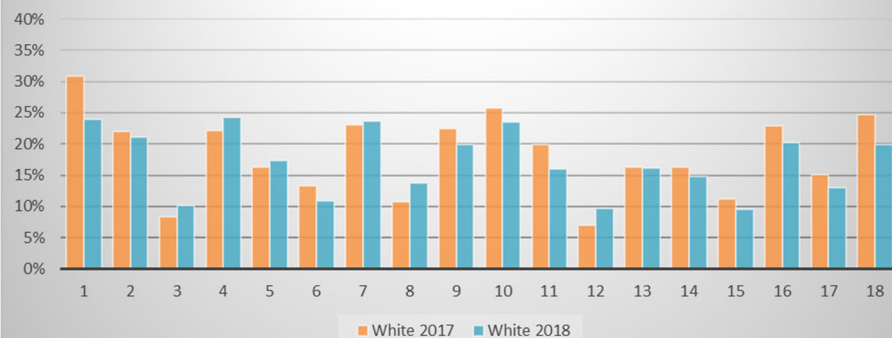


FRONT TEES (Yellow & Red) - BOGEYS

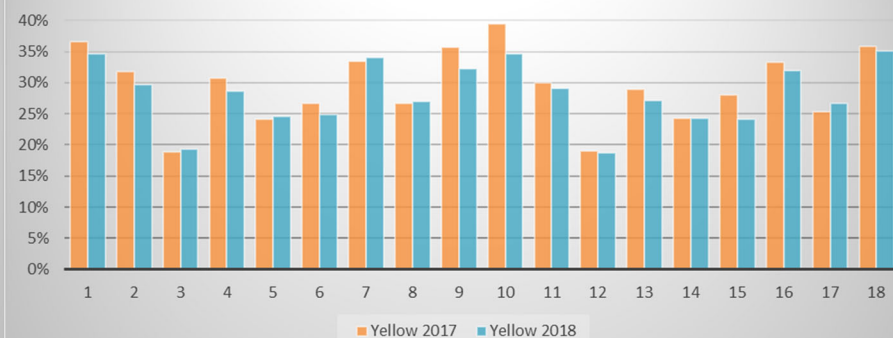


COMPARAISON - DOUBLE BOGEYS - 2017-2018 (pourcentage)

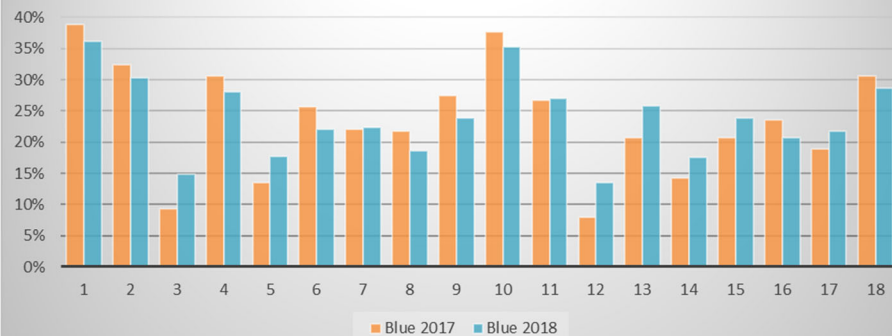
WHITE - DOUBLE BOGEYS - 2018 vs. 2017



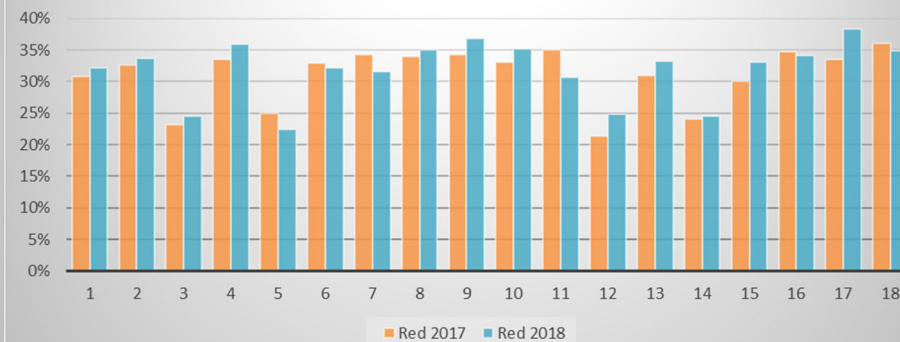
YELLOW - DOUBLE BOGEYS - 2018 vs. 2017



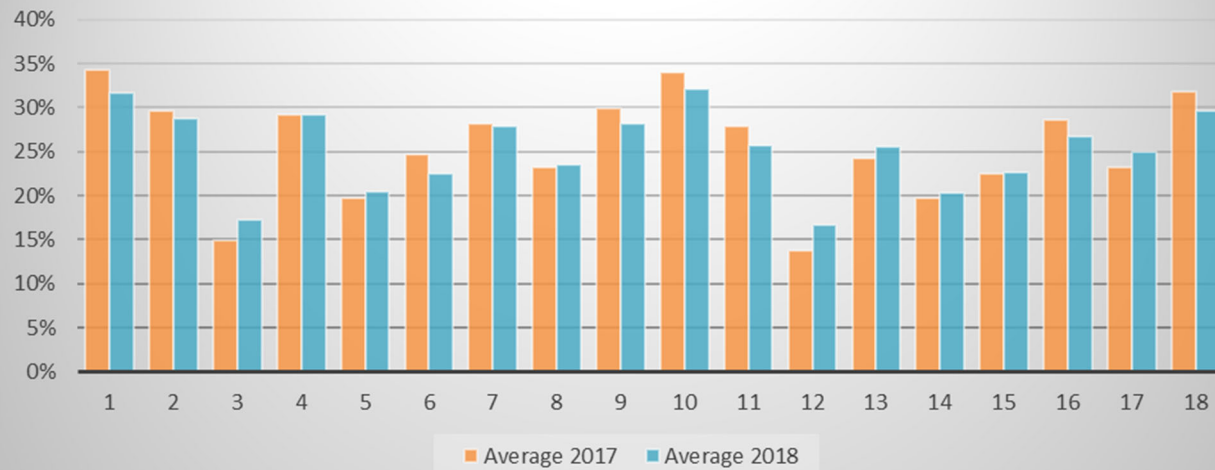
BLUE - DOUBLE BOGEYS - 2018 vs. 2017



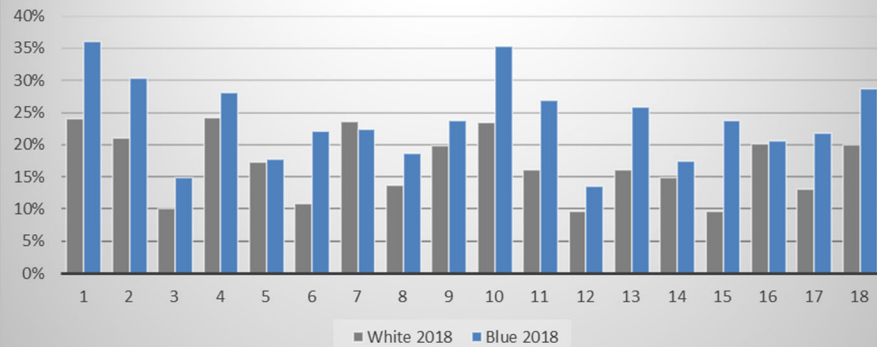
RED - DOUBLE BOGEYS - 2018 vs. 2017



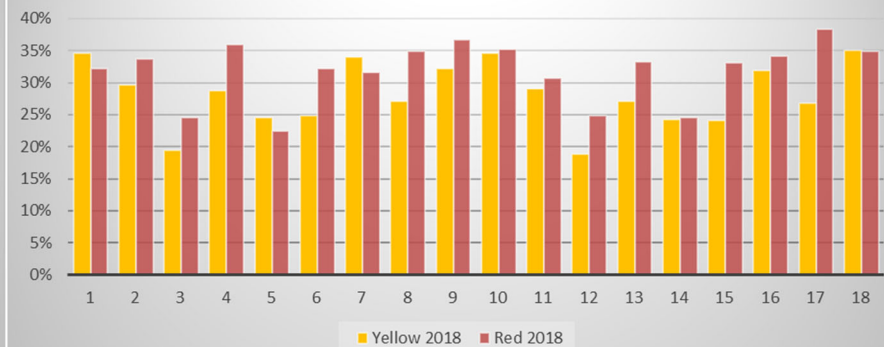
AVERAGE - DOUBLE BOGEYS - 2018 vs. 2017



BACK TEES (White & Blue) - DOUBLE BOGEYS

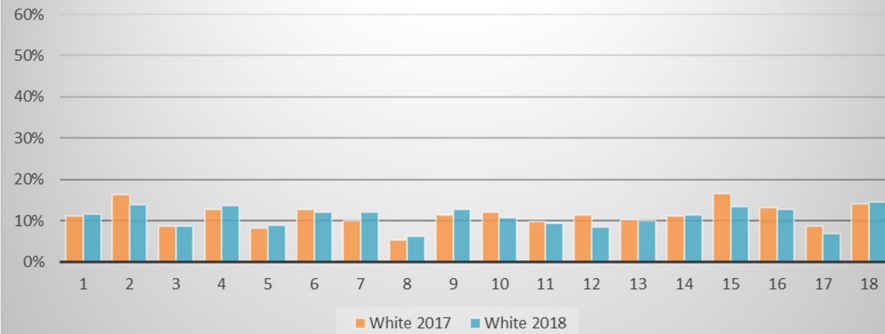


FRONT TEES (Yellow & Red) - DOUBLE BOGEYS

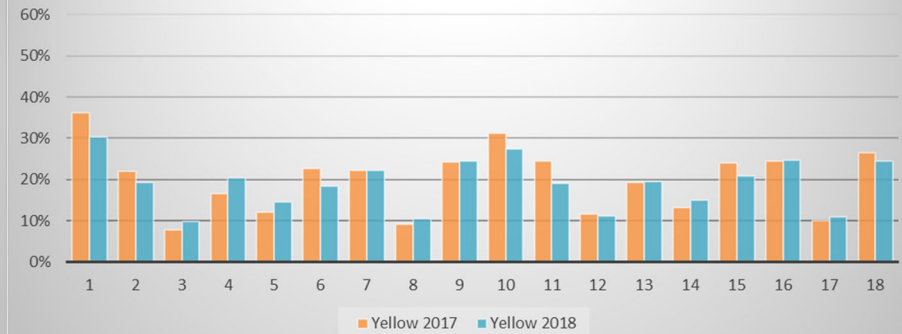


COMPARAISON - TRIPLE BOGEYS OU + - 2017-2018 (pourcentage)

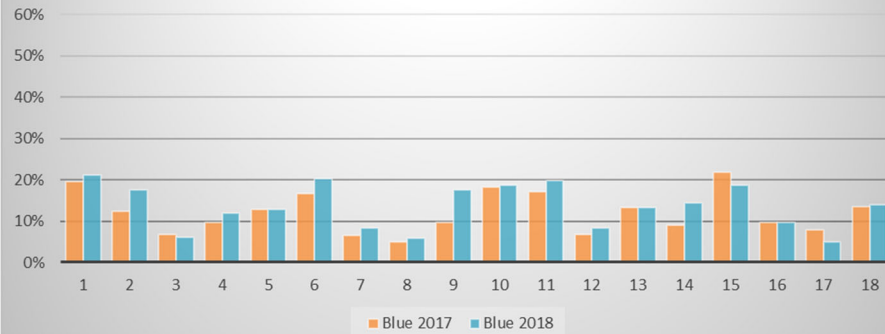
WHITE - TRIPLE BOGEYS OU + - 2018 vs. 2017



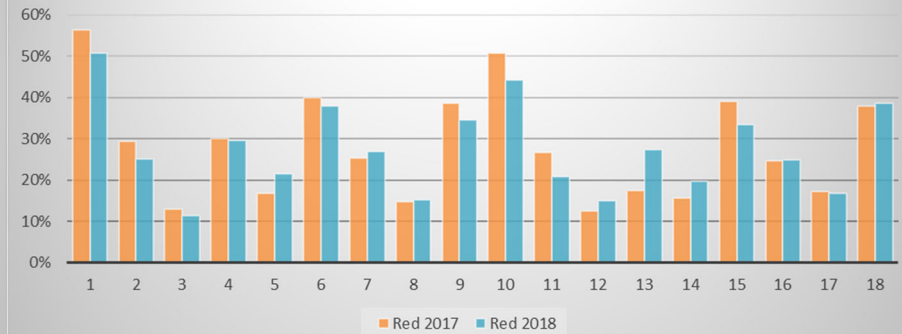
YELLOW - TRIPLE BOGEYS OU + - 2018 vs. 2017



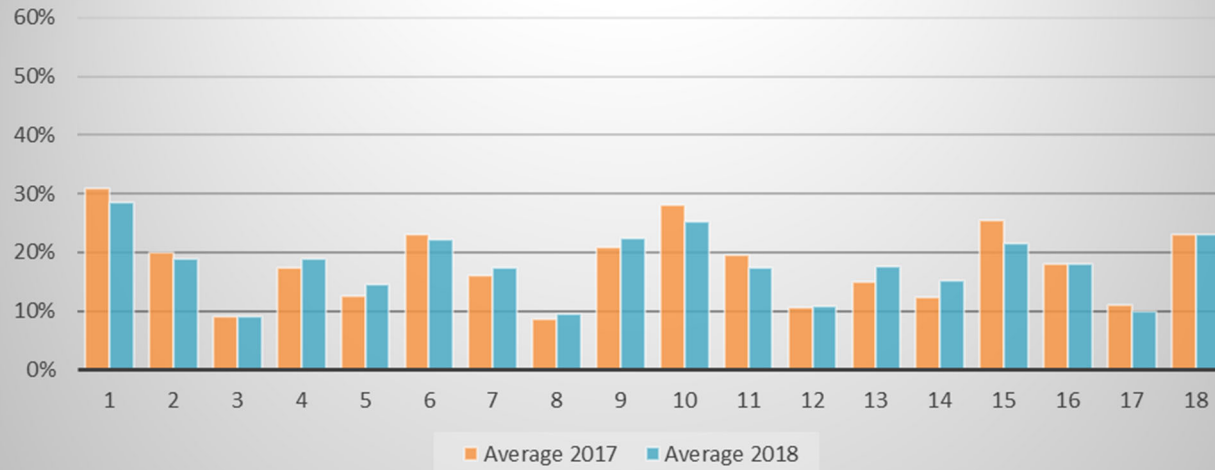
BLUE - TRIPLE BOGEYS OU + - 2018 vs. 2017



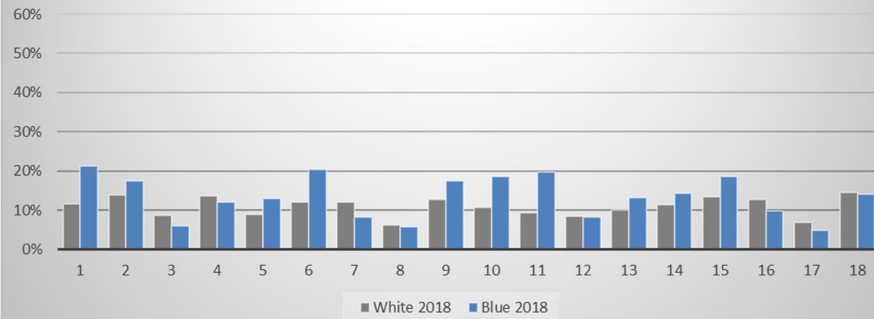
RED - TRIPLE BOGEYS OU + - 2018 vs. 2017



AVERAGE - TRIPLE BOGEYS OU + - 2018 vs. 2017



BACK TEES (White & Blue) - TRIPLE BOGEYS OU +



FRONT TEES (Yellow & Red) - TRIPLE BOGEYS OU +

